



25

APARTMENTS & LOFTS UNDER 1000 SQUARE FEET



JAMES GRAYSON TRULOVE

BROOKLYN APARTMENT

600
SQUARE FEET

ARCHITECT ROBERT KANER INTERIOR DESIGN • PHOTOGRAPHER TOM POWEL IMAGING



Although only 600 square feet, the renovation of this apartment resulted in significant storage space, a niche for a home office, and ample living space. A color palette and clean modern details were introduced to visually open up the space. A medium-dark hardwood floor is in contrast to the off-white walls and the bright white ceiling. Soft colors are used along one wall in each room to provide a visual anchor. Closet doors in the hallway and bedroom have flush pivot-hinges with minimal hardware, allowing them to blend with surrounding walls and create more unified surfaces.

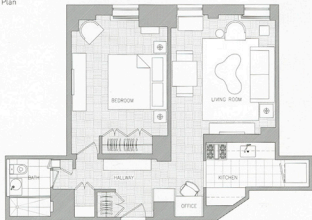
The entry hallway is multifunctional. Besides providing for circulation among the various areas of the apartment, it contains a niche at one end for a built-in home office unit and opposite the entry door is a bank of floating shelving providing a visual pull into the apartment from the entrance.

The small bathroom was expanded visually. As in the rest of the apartment, a relatively dark floor is used to ground the space. The pattern of wall tiles creates a sense of openness, transitioning from a darker color concentration at the bottom to a lighter, modulated color concentration at eye level and above, leading to the bright white ceiling. The shower area has been incorporated visually into the bathroom, with the room's perimeter walls continuing uninterrupted into the shower. A frameless glass partition enhances this visual connection. A large recessed medicine cabinet with mirrored doors visually expands the room while providing additional storage space. More storage is introduced through stone niches in one of the shower walls, and from a new floor-to-ceiling closet taken in part from an adjacent hallway closet, with a fully tiled concealed door that blends with the walls.





Floor Plan



PREVIOUS PAGES: To contrast with the all off-white apartment, one wall in each room is painted a different, soft color.

ABOVE: A medium-dark wood parquet floor running throughout the apartment visually connects the rooms.



ABOVE: An open bookcase was installed opposite the entry door. It acts as a focal point upon entering the apartment while providing additional storage.

LEFT: Also in the entry hallway is a niche containing a fully equipped home office.





FAR LEFT: The window wall of the bedroom is painted a light pastel. **LEFT AND ABOVE:** Several clever design touches were employed to make the small bathroom appear larger. The wall tiles become lighter towards the ceiling; the tiled walls continue into the shower stall, creating a visual continuum; and a clear glass shower door and large vanity mirror visually expand the space.